



**Government of India
Ministry of Earth Sciences
India Meteorological Department**



Press Release

Date: 06th August, 2025

Time of Issue: 1345 hours IST

Subject: i) Heavy to very heavy rainfall likely to continue over Uttarakhand, Uttar Pradesh during next 24 hours and likely to reduce thereafter.
ii) Heavy to very heavy rainfall likely to continue over Northeast & adjoining East India during next 7 days with extremely heavy rainfall (≥ 21 cm) very likely at isolated places over Arunachal Pradesh on 08th August.
iii) Subdued rainfall activities likely over Central India and Rajasthan during next 6-7 days.

Realised weather during past 24 hours till 0830 hours IST of today, the 06th August, 2025:

- ❖ Heavy to very heavy rainfall with extremely heavy falls (≥ 21 cm) has been recorded at isolated places over Uttarakhand, Coastal Karnataka.
- ❖ Heavy to very heavy rainfall (7-20 cm) has been recorded at isolated places over West Uttar Pradesh, Himachal Pradesh, Punjab, Sub-Himalayan West Bengal, Goa, Tamil Nadu, North Interior Karnataka; **Heavy rainfall (7-11 cm)** at isolated places over Jammu & Kashmir, north Haryana, East Uttar Pradesh, Coastal Andhra Pradesh, Gangetic West Bengal, Odisha, Madhya Maharashtra, South Interior Karnataka, Kerala, Telangana, Arunachal Pradesh, Assam and Tripura.

For more details of realised weather, kindly refer [Annexure I](#).

i. Weather Systems, Forecast and Warnings (refer to Annexure II & III):

- ❖ The western end of monsoon trough to the north of its normal position at mean sea level and eastern end runs near the foothills of the Himalayas.
- ❖ An upper air cyclonic circulation lay over central parts of Bangladesh in middle tropospheric levels.
- ❖ An upper air cyclonic circulation lay over South Madhya Maharashtra in lower tropospheric levels.
- ❖ An east-west trough roughly along Lat. 12°N from southern parts of eastcentral Arabian Sea to central parts of south Bay of Bengal in lower tropospheric levels.
- ❖ A trough runs from central parts of north Uttar Pradesh to northern parts of Kutch in lower tropospheric levels.
- ❖ An upper air cyclonic circulation lies over Himachal Pradesh & adjoining Uttarakhand in lower tropospheric levels.
- ❖ A Western Disturbance as a cyclonic circulation over Punjab & neighbourhood in middle tropospheric levels with a trough aloft in middle tropospheric level runs roughly along Long. 73°E to north of 32°N.

Under the influence of these systems, the following weather is likely:

Northwest India:

- ❖ Isolated **heavy rainfall** likely over Uttarakhand, Himachal Pradesh during 06th-12th; Jammu-Kashmir on 06th; Punjab on 06th & 12th; Haryana on 06th, 11th & 12th; West Uttar Pradesh on 06th, 08th, 11th & 12th; East Uttar Pradesh on 08th, 11th & 12th August with **very heavy rainfall** over Uttarakhand on 06th and East Uttar Pradesh on 12th August.
- ❖ Light/moderate rainfall at many places accompanied with thunderstorm & lightning likely over Western Himalayan region and many/some places over the plains during next 7 days.

South Peninsular India:

- ❖ Isolated **heavy rainfall** likely over Tamil Nadu, Kerala & Mahe, Karnataka, Coastal Andhra Pradesh & Yanam, Telangana, Rayalaseema during 06th-09th August with **very heavy rainfall** over Tamil Nadu, Kerala, North Interior Karnataka on 06th; Coastal & South Interior Karnataka on 06th & 07th August.
- ❖ Strong surface winds (speed reaching 40-50 kmph) very likely over South Peninsular India during next 2 days.
- ❖ Light to moderate rainfall at some/many places accompanied with thunderstorm & lightning likely over Tamil Nadu, Kerala & Mahe, Lakshadweep, Karnataka, Rayalaseema, Coastal Andhra Pradesh & Yanam and Telangana during next 5 days.

Northeast India:

- ❖ **Extremely heavy rainfall (≥ 21 cm)** very likely at isolated places over Arunachal Pradesh on 08th August.
- ❖ Light/moderate rainfall at many places accompanied with thunderstorm, lightning and isolated **heavy rainfall** likely to continue over Arunachal Pradesh, Assam & Meghalaya Nagaland, Manipur, Mizoram & Tripura during 06th-12th August with isolated **very heavy rainfall over Arunachal Pradesh during 07th-11th and Assam & Meghalaya, Nagaland, Manipur, Mizoram & Tripura on 07th & 08th August.**

East & Central India:

- ❖ Isolated **heavy rainfall** likely over Sub-Himalayan West Bengal & Sikkim, Bihar during 06th-12th; Odisha, Gangetic West Bengal during 06th-08th; Jharkhand on 07th & 08th; Chhattisgarh on 11th & 12th August **with isolated very heavy rainfall over Bihar on 07th & 08th; Jharkhand on 07th; Sub-Himalayan West Bengal & Sikkim on 07th & 11th August.**
- ❖ Light to moderate rainfall at most/many places accompanied with thunderstorm & lightning likely over the region during next 5 days.

West India:

- ❖ Isolated **heavy rainfall** likely over Marathwada, Konkan & Goa during 06th-08th and Madhya Maharashtra on 07th August.
- ❖ Light to moderate rainfall at many/some places very likely over the region during next 5-6 days.

Fishermen warning:

Fishermen are advised to avoid venturing into the following from 06th August to 11th August 2025 to the following Areas:

Arabian Sea: Along and off Kerala, Karnataka coast Lakshadweep area, off Maharashtra, Goa coasts for 06th August, few parts of Northwest Arabian Sea adjoining Oman coasts during 08th to 10th August, some parts of southwest and westcentral Arabian Sea; along and off the Somalia coast and adjoining sea areas during 06th to 11th August.

Bay of Bengal: Over some parts of Gulf of Mannar adjoining Comorin area and over Sri Lanka coasts, few parts of southwest Bay of Bengal during 06th to 11th August.

ii. Weather conditions and forecast over Delhi/NCR during 06th to 09th August, 2025 (Annexure IV)

For more details, kindly refer National Weather Bulletin:

https://mausam.imd.gov.in/responsive/all_india_forecast_bulletin.php

For District wise warnings refer: <https://mausam.imd.gov.in/responsive/districtWiseWarningGIS.php>

For Fishermen warning refer <https://rsmcnewdelhi.imd.gov.in/fishermen-warning.php>

Rainfall recorded (in cm) during past 24 hours till 0830 hours IST of today, the 06th August:

Uttarakhand: Hardwar (dist Hardwar) 22; Narendranagar (dist Garhwal Tehri) 20; Rishikesh (dist Dehradun) 19; Kashipur (dist Udham Singh Nagar) 18; Jollygrant (dist Dehradun) 17; Roshnabad (dist Hardwar), Bageshwar (thmo) (dist Bageshwar) 16 Each; Pantnagar (dist Udham Singh Nagar), Jaspur (dist Udham Singh Nagar) 15 Each; Haldwani (dist Nainital), Someshwar (dist Almora) 14 Each; Nainital (dist Nainital), Laksar (dist Hardwar) 13 Each; Kotdwara (dist Garhwal Pauri), Mukteshwar (dist Nainital), Pauri (dist Garhwal Pauri), Loharkhet (dist Bageshwar) 11 Each; Betalghat (dist Nainital), Sama (dist Bageshwar), Dhanaulti (dist Garhwal Tehri), Kapkot (dist Bageshwar), Gairsain (dist Chamoli) 10 Each; Tehri (CWC) (dist Garhwal Tehri), Rudraprayag (dist Rudraprayag), Deoprayag (dist Garhwal Tehri), Khatima (dist Udham Singh Nagar), Roorkee (dist Hardwar), Srinagar (dist Garhwal Pauri) 9 Each; Landsdown (dist Garhwal Pauri), Dehra Dun (dist Dehradun), Berinag (dist Pithoragarh) 8 Each; Banbasa (dist Champawat), Keertinagar (dist Garhwal Tehri), Lohaghat (dist Champawat), Bhagwanpur (dist Hardwar), Champawat (dist Champawat), Chaukhutia (dist Almora) 7 Each;

West Uttar Pradesh: Nagina (dist Bijnor) 19; Baheri (dist Bareilly), Bijnor (dist Bijnor) 16 Each; Thakurdwara (dist Moradabad) 15; Najibabad (t) (dist Bijnor) 14; Kanth (dist Moradabad), Dhampur (dist Bijnor) 11 Each; Chandpur (dist Bijnor) 9; Bilaspur (dist Rampur) 8; Moradabad (dist Moradabad), Bareilly CWC (dist Bareilly) 7 Each;

North Interior Karnataka: Vijayapura PTO (dist Vijayapura) 15; Lakshmeswar (dist Gadag) 13; Shirahatti (dist Gadag), Tavaragera (dist Koppal) 9 Each; Guledgud (dist Bagalkote), Devarhippargi (dist Vijayapura), Bellatti (dist Gadag), Lokapur (dist Bagalkote), Hungund (dist Bagalkote), Bidar PTO (dist Bidar) 7 Each;

Himachal Pradesh: Kasauli (dist Solan) 14; Dharampur (dist Solan), Gohar (dist Mandi) 12 Each; Chuari (dist Chamba) 10; Naina Davi (dist Bilaspur), Nagrota Surian (dist Kangra) 9 Each; Sundarnagar (dist Mandi) 8; Guler (dist Kangra), Karsog (dist Mandi), Banjar (dist Kullu), Bilaspur Sadar (dist Bilaspur), Kangra AP (dist Kangra) 7 Each;

Coastal Karnataka: Manki (dist Uttara Kannada) 13; Belthangadi (dist Dakshina Kannada) 11; Gersoppa (dist Uttara Kannada) 10; Ankola (dist Uttara Kannada), Siddapura (dist Udupi), Kadra (dist Uttara Kannada) 7 Each;

Punjab: Ghanauli (dist Rupnagar) 12; Ballawal Saunkri (dist Sbs Nagar) 8; Tibri (dist Gurdaspur), Balachaur AWS (dist Sbs Nagar), Gurdaspur AMFU (dist Gurdaspur) 7 Each;

Sub Himalayan West Bengal & Sikkim: Gairkata Tea Estate (dist Jalpaiguri) 12; Buxaduar (dist Alipurduar), Baintgoorie T.e. (dist Jalpaiguri), Dalgaon Tea Estate (dist Alipurduar) 8 Each; Mekhliganj (dist Cooch Behar), Sankosh (dist Cooch Behar), Anandpur Tea Estate (dist Jalpaiguri) 7 Each;

Goa: Mapusa (dist North Goa) 12;

Tamil Nadu: R.k.pet (dist Tiruvallur) 12; Singampunari (dist Sivaganga) 10; Kodumudi (dist Erode), Tirupuvanam (dist Sivaganga) 8 Each; Idayapatti (dist Madurai) 7;

Madhya Maharashtra: Sholapur (dist Sholapur) 11;

South Interior Karnataka: Rampura (dist Chitradurga) 11; Balehonnur (dist Chikkamagaluru) 9; Kalasa (dist Chikkamagaluru) 8; Bellur (dist Mandya), Hiriyur HMS (dist Chitradurga), Jayapura (dist Chikkamagaluru), Hagaribommanahalli (dist Vijayanagara) 7 Each;

Kerala & Mahe: Vellanikkara (dist Thrissur), Thennala AWS (dist Malappuram) 11 Each; Vadakkancherry (dist Thrissur), Ayyankunnu AWS (dist Cannur) 10 Each;

East Uttar Pradesh: Bhinga (dist Shrawasti) 10; Deogaon Lalganj (dist Azamgarh) 9;

Tripura: Jirania ARG (dist West Tripura) 10; Hrc Nagicherra ARG (dist West Tripura) 9; Sabroom (dist South Tripura), Sabroom AWS (dist South Tripura) 8 Each;

Assam: Kampur (dist Nagaon) 10; Bijni ARG (dist Chirang) 9;

Bihar: Taibpur (dist Kishanganj) 9; Galgalia (dist Kishanganj) 7;

Rayalaseema: Nandavaram (dist Kurnool) 9; Alur (dist Kurnool), Chittoor (dist Chittoor) 8 Each; Gooty (dist Anantapuramu), Guntakal (dist Anantapuramu) 7 Each;

Telangana: Bhuvanagiri (dist Y. Bhuvanagiri) 9; Pochampalle (dist Y. Bhuvanagiri) 8;

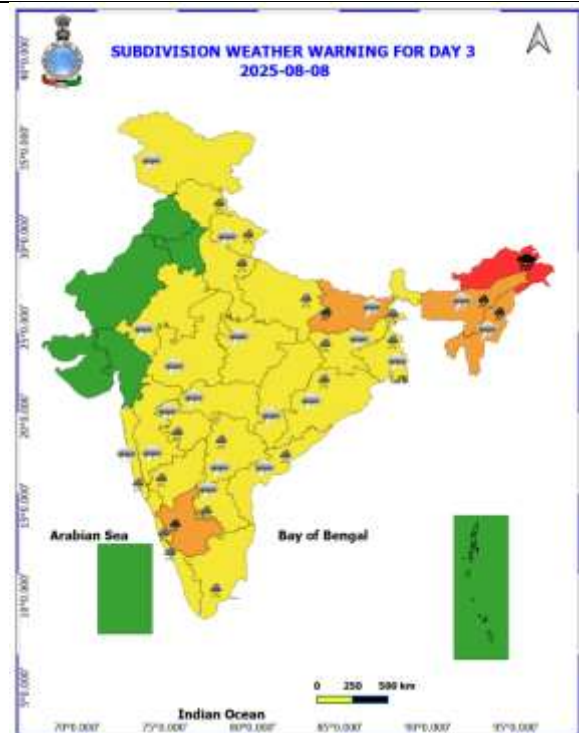
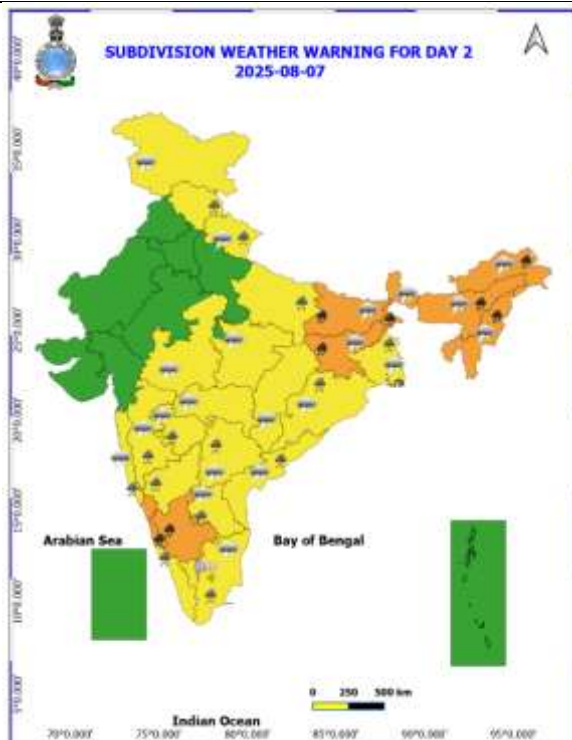
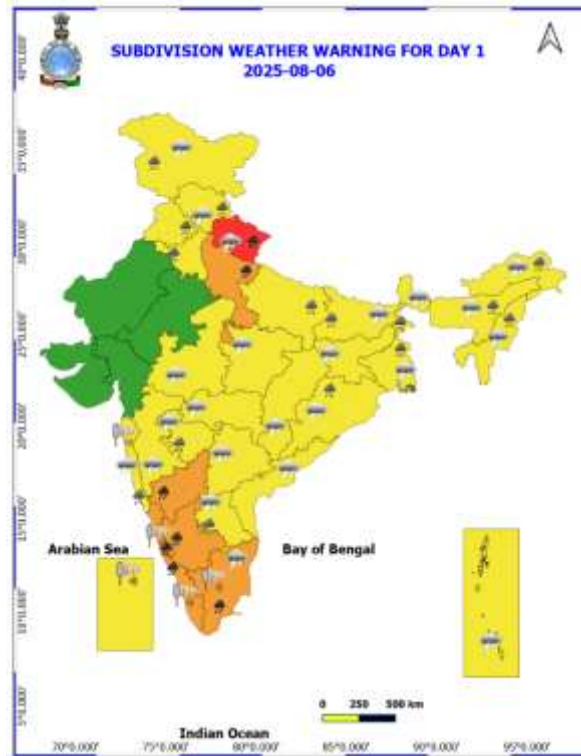
Odisha: Kotpad (dist Koraput) 9;

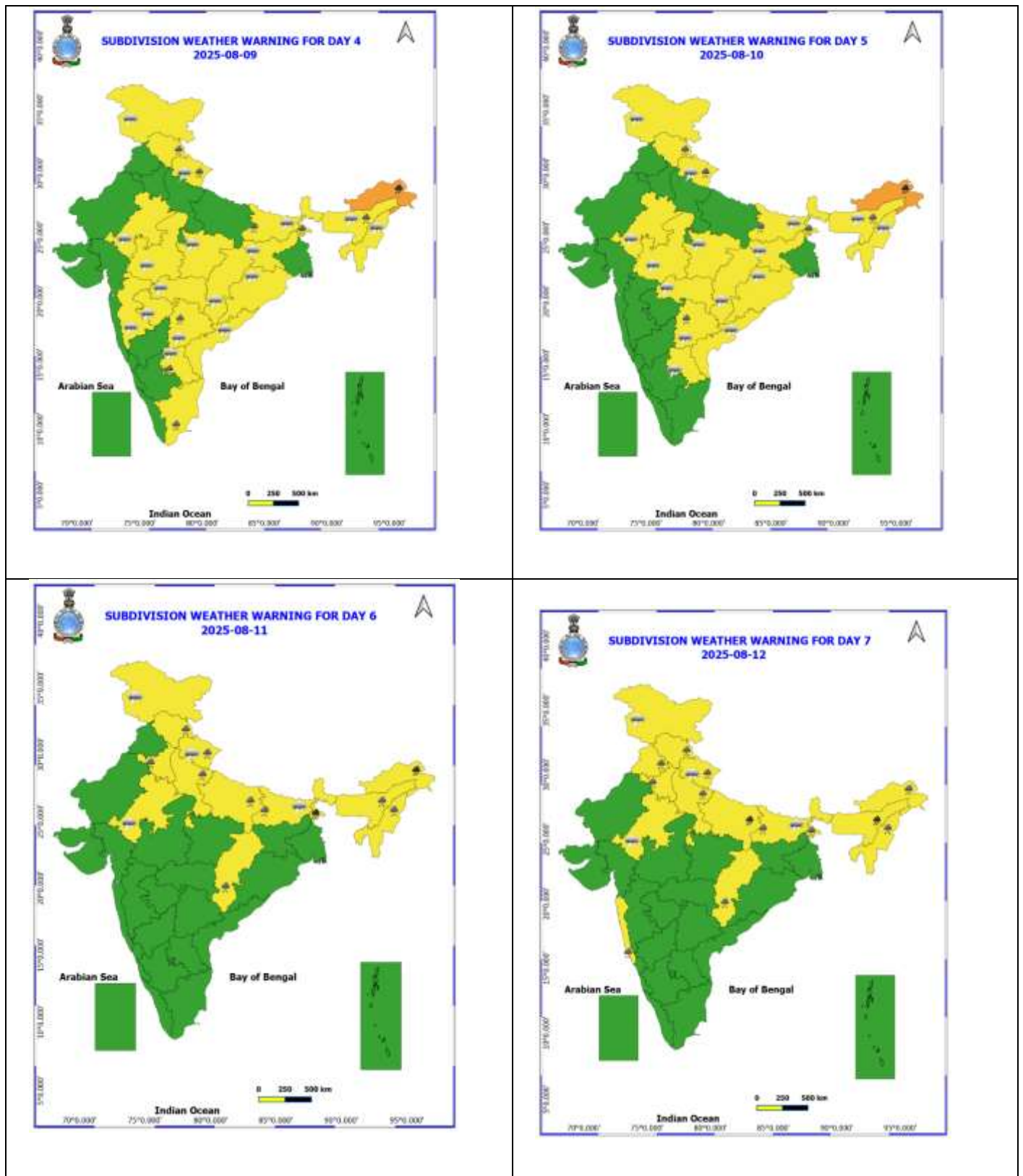
Haryana: Dadupur (dist Yamuna Nagar) 8; Morni (dist Panchkula) 7;

Jammu: Udhampur(IAF) (dist Udhampur) 7.

| Table-1 | | | | | | | | |
|--------------------------|----------------------------------------|--------|--------|--------|--------|---------|---------|---------|
| 7 Days Rainfall Forecast | | | | | | | | |
| S.No. | Subdivision | 6- Aug | 7- Aug | 8- Aug | 9- Aug | 10- Aug | 11- Aug | 12- Aug |
| | | Day 1 | Day 2 | Day 3 | Day 4 | Day 5 | Day 6 | Day 7 |
| 1 | ANDAMAN & NICOBAR ISLANDS | SCT | FWS | FWS | FWS | FWS | WS | WS |
| 2 | ARUNACHAL PRADESH | FWS | WS | WS | WS | WS | WS | FWS |
| 3 | ASSAM & MEHGHALAYA | FWS | FWS | WS | WS | WS | WS | FWS |
| 4 | NAGALAND, MANIPUR, MIZORAM AND TRIPURA | WS | FWS | WS | FWS | FWS | FWS | FWS |
| 5 | SUB HIMALAYAN WEST BENGAL & SIKKIM | WS | WS | WS | WS | WS | WS | WS |
| 6 | GANGETIC WEST BENGAL | WS | WS | WS | FWS | FWS | FWS | FWS |
| 7 | ODISHA | SCT | FWS | FWS | SCT | SCT | SCT | SCT |
| 8 | JHARKHAND | FWS | FWS | FWS | FWS | FWS | FWS | WS |
| 9 | BIHAR | SCT | FWS | WS | FWS | FWS | FWS | FWS |
| 10 | EAST UTTAR PRADESH | SCT | FWS | WS | FWS | FWS | FWS | WS |
| 11 | WEST UTTAR PRADESH | FWS | SCT | FWS | FWS | FWS | FWS | FWS |
| 12 | UTTARAKHAND | WS | FWS | WS | WS | WS | WS | WS |
| 13 | HARYANA, CHANDIGARH & DELHI | SCT | ISOL | SCT | SCT | FWS | FWS | SCT |
| 14 | PUNJAB | SCT | ISOL | ISOL | SCT | SCT | FWS | SCT |
| 15 | HIMACHAL PRADESH | FWS | FWS | FWS | WS | WS | WS | WS |
| 16 | JAMMU AND KASHMIR AND LADAKH | FWS | SCT | SCT | SCT | SCT | SCT | FWS |
| 17 | WEST RAJASTHAN | DRY | DRY | ISOL | ISOL | ISOL | ISOL | ISOL |
| 18 | EAST RAJASTHAN | ISOL | ISOL | ISOL | SCT | SCT | SCT | SCT |
| 19 | WEST MADHYA PRADESH | ISOL | SCT | SCT | FWS | FWS | SCT | SCT |
| 20 | EAST MADHYA PRADESH | SCT | SCT | FWS | WS | WS | FWS | FWS |
| 21 | GUJRAT REGION | FWS | FWS | FWS | SCT | SCT | SCT | SCT |
| 22 | SAURASHTRA & KUTCH | SCT | SCT | SCT | SCT | SCT | SCT | SCT |
| 23 | KONKAN & GOA | FWS | FWS | WS | WS | WS | WS | WS |
| 24 | MADHYA MAHARASHTRA | SCT | SCT | FWS | FWS | SCT | SCT | SCT |
| 25 | MARATHWADA | FWS | FWS | FWS | SCT | ISOL | ISOL | SCT |
| 26 | VIDARBHA | SCT | SCT | FWS | FWS | FWS | FWS | FWS |
| 27 | CHHATTISGARH | SCT | FWS | WS | WS | FWS | FWS | FWS |
| 28 | COASTAL ANDHRA PRADESH | ISOL | SCT | FWS | FWS | SCT | ISOL | ISOL |
| 29 | TELANGANA | FWS | FWS | FWS | FWS | FWS | FWS | FWS |
| 30 | RAYALASEEMA | FWS | FWS | FWS | FWS | SCT | ISOL | ISOL |
| 31 | TAMILNADU & PUDUCHERRY | SCT | SCT | SCT | SCT | ISOL | ISOL | ISOL |
| 32 | COSTAL KARNATAKA | WS | WS | WS | WS | WS | WS | WS |
| 33 | NORTH INTERIOR KARNATAKA | WS | WS | WS | WS | WS | FWS | FWS |
| 34 | SOUTH INTERIOR KARNATAKA | WS | WS | WS | WS | WS | FWS | FWS |
| 35 | KERALA AND MAHE | WS | WS | WS | FWS | FWS | FWS | FWS |
| 36 | LAKSHADWEEP | WS | FWS | FWS | FWS | FWS | FWS | FWS |

- As the lead period increases forecast accuracy decrease.





- Action may be taken based on ORANGE AND REDCOLOUR warnings.
- Vulnerable regions likely urban and hilly areas action may be initiated for heavy rainfall warning.
- As the lead period increases forecast accuracy decreases.

Detailed districtwise Multi Hazard weather warning for next five days available at <https://mausam.imd.gov.in/responsive/districtWiseWarningGIS.php>

Weather forecast over Delhi/NCR during 06th August to 09th August 2025**Past Weather:**

There has been no large change in minimum and maximum temperatures over Delhi during the past 24 hours. The minimum temperatures are in the range of 24-26°C and maximum temperatures were in the range of 31-33°C. The minimum temperatures were near normal and maximum temperatures were below normal by 2 - 3°C over Delhi. Generally cloudy sky conditions with predominant surface wind from the southwest/southeast direction with wind speeds up to 14 kmph prevailed during the past 24 hours. Partly cloudy sky conditions with a wind speed of less than 14 kmph from the southwest direction prevailed over the region in the forenoon today.

Weather Forecast:

06.08.2025: Partly cloudy sky. Possibility of a spell of very light rain/drizzle during evening/night. The maximum temperatures over Delhi are likely to be in the range of 33 to 35°C. The maximum temperature will be near normal. The predominant surface wind will likely be from the southwest direction with a wind speed of 10-15 kmph in the afternoon. The wind speed will remain same to 10-15 kmph from the southeast direction during evening and night.

07.08.2025: Partly cloudy sky. Possibility of very light rain/drizzle. The maximum and minimum temperatures over Delhi are likely to be in the range of 34 to 36°C and 24 to 26°C respectively. The minimum temperature will be below normal up to 1 to 2°C and the maximum temperature will be above normal up to 1 to 2°C. The predominant surface wind will likely be from the southwest direction with a wind speed of less than 12 kmph during the morning hours. The wind speed will gradually increase becoming less than 20 kmph from the southwest direction in the afternoon. The wind speed will gradually decrease becoming less than 12 kmph from the southwest direction during the evening and night.

08.08.2025: Partly cloudy sky. Possibility of very light to light rain/thundershowers. The maximum and minimum temperatures over Delhi are likely to be in the range of 33 to 35°C and 24 to 26°C respectively. The minimum temperature will be below normal up to 1 to 2°C and the maximum temperature will be near normal. The predominant surface wind will likely be from the southwest direction with a wind speed of less than 15 kmph during the morning hours. The wind speed will gradually decrease becoming less than 10 kmph from the southwest direction in the afternoon. The wind speed will increase becoming less than 15 kmph from the southwest direction during the evening and night.

09.08.2025: Partly cloudy sky. Possibility of very light to light rain/thundershowers. The maximum and minimum temperatures over Delhi are likely to be in the range of 32 to 34°C and 24 to 26°C respectively. The minimum temperature will be below normal up to 1 to 3°C and the maximum temperature will be below normal up to 1 to 2°C. The predominant surface wind will likely be from the southwest direction with a wind speed of less than 15 kmph during the morning hours. The wind speed will gradually decrease becoming less than 10 kmph from the southwest direction in the afternoon. The wind speed will gradually increase becoming less than 12 kmph from the southwest direction during the evening and night.

Impact expected and Action Suggested due to light to moderate rainfall with thundershowers:

- Be cautious and take precautionary measures, though there is the likelihood of thunderstorms/lightning.
- Damage to standing crops, Minor to major damage to power and communication lines due to breaking of branches, Partial damage to vulnerable structures due to strong winds, Loose objects may fly.
- People are advised to keep a watch on the weather for worsening conditions and be ready to move to safer places accordingly, stay indoors, close windows & doors and avoid travel if possible, take safe shelters; do not take shelter under trees, do not lie on concrete floors and do not lean against concrete walls, unplug electrical/ electronic appliances, immediately get out of water bodies, keep away from all the objects that conduct electricity.

Impact & Action Suggested due to

- ❖ **Very heavy rainfall** over Uttarakhand, Tamil Nadu, Kerala, North Interior Karnataka on 06th; Coastal & South Interior Karnataka on 06th & 07th; Arunachal Pradesh during 07th-11th; Assam & Meghalaya, Nagaland, Manipur, Mizoram & Tripura, Bihar on 07th & 08th; Jharkhand on 07th; Sub-Himalayan West Bengal & Sikkim on 07th & 11th and East Uttar Pradesh on 12th August.

Impact Expected

- Localized Flooding of roads, water logging in low lying areas and closure of underpasses mainly in urban areas of the above region.
- Occasional reduction in visibility due to heavy rainfall.
- Disruption of traffic in major cities due to water logging in roads leading to increased travel time.
- Minor damage to kutcha roads.
- Possibilities of damage to vulnerable structure.
- Localized Landslides/Mudslides/landslips/mudslips/landsinks/mudsinks.
- Damage to horticulture and standing crops in some areas due to inundation.
- It may lead to riverine flooding in some river catchments (for riverine flooding please visit Web page of CWC)

Action Suggested

- Check for traffic congestion on your route before leaving for your destination.
- Follow any traffic advisories that are issued in this regard.
- Avoid going to areas that face the water logging problems often.
- Avoid staying in vulnerable structure.

Agromet advisories for likely impact of Heavy / Heavy to Very Heavy / Extremely Heavy Rainfall

- In **Uttarakhand**, postpone sowing of black gram, green gram and soybean till cessation of heavy rains and drain out excess water from already sown / transplanted fields of rice, sugarcane, maize, black gram, green gram, groundnut, pigeon pea, finger millet, soybean and vegetables to avoid waterlogging in **Bhabar and Tarai Zone**. In **Sub Humid Sub Tropic Zone**, avoid transplanting of rice till receding of excess water from the fields. If there is damage to rice seedlings in transplanted rice fields, undertake late or staggered planting with old seedlings. If the rice crop is totally damaged, carry out direct seeding using short-duration varieties under optimum soil moisture conditions. Drain out excess water from fields of rice, green gram, black gram, barnyard millet and finger millet. In **Hill Zone**, strengthen the bunds to prevent surface runoff of water. Postpone sowing of vegetable pea in case of excessive wet soil conditions. Maintain proper drainage channels in the crop fields.
- In **Himachal Pradesh**, cover the cauliflower nursery with plastic sheets to prevent damage from heavy rainfall in **High Hills Sub Temperate Wet Zone**. Make proper drainage channels in maize, ginger and vegetable fields in **Mid Hills Sub Humid Zone**; rice, maize, pulses and vegetable fields in **Sub Montane and Low Hills Sub Tropical Zone** and kidney beans, finger millet, cucurbits and vegetables in **High Hills Sub Temperate Wet Zone**.
- In **Uttar Pradesh**, postpone sowing of pigeon pea and provide proper drainage in fields of rice, maize, black gram, green gram and vegetables in **Western Plain Zone**. In **Central Plain Zone**, drain out excess water from fields of rice, maize, groundnut, sesame, black gram, green gram and vegetables.
- In **Arunachal Pradesh**, postpone all fresh sowing and transplanting operations till cessation of heavy rains. Harvest nearly mature banana bunches and keep them in a dry and safe place for ripening. Ensure proper drainage in rice, maize, finger millet, soybean and vegetables and fruit orchards to avoid waterlogging. In rice fields, strengthen bunds to prevent field erosion and seedling washout. Provide strong support to fruit-bearing plants to prevent them from bending or breaking during heavy rains.
- In **Assam**, to prevent waterlogging, ensure proper drainage in *Sali* rice, green gram and pigeon pea fields and banana orchards in **Lower Brahmaputra Valley Zone**; *Sali* rice and sugarcane fields in **North Bank Plain Zone**; *Sali* rice fields in **Upper Brahmaputra Valley Zone** and **Barak Valley Zone** and rice and sesame fields in **Hill Zone**. In **Barak Valley Zone**, postpone sowing of cauliflower.
- In **Meghalaya**, ensure proper drainage in rice, maize, turmeric, chilli, okra and bitter gourd fields to prevent waterlogging. Provide staking / support to tall and fragile crops like banana, papaya, bottle gourd etc. to prevent lodging.

- In **Nagaland**, provide proper drainage channels in maize fields to manage surface water runoff. Clean the drainage channels in rice fields to drain out excess water.
- In **Tripura**, maintain proper drainage in rice, chilli and ginger fields.
- In **Sub-Himalayan West Bengal**, make provision to drain out excess water from rice, ginger, vegetable fields and fruit orchards in **Hill Zone** and *aman* paddy and vegetable fields in **Terai Zone**. Cover the chilli seedlings with plastic to protect them from heavy rains in **Terai Zone**.
- In **Bihar**, make provisions to drain out excess water from standing crops such as maize, nurseries of onion, chilli, and cauliflower in **North West Alluvial Plain Zone** and maize, finger millet, ragi, kodo, sava, china etc. in **North East Alluvial Zone**.
- In **Kerala**, provide adequate drainage in fields of rice, coconut, banana and ginger. Provide support to banana plantations. Make the vegetable pandals stronger.
- In **Tamil Nadu**, ensure proper drainage in the fields of sorghum to prevent waterlogging, especially in heavy soils and low-lying areas. Ensure proper drainage around the coconut plants to avoid root rot.
- In **Karnataka**, provide adequate drainage facilities in arecanut and banana plantations in **Coastal Zone**. In **Southern Transition Zone**, avoid paddy transplanting till cessation of heavy rains and ensure proper drainage in ginger, maize, finger millet and transplanted rice fields and arecanut and coconut plantations. In **Southern Dry Zone**, clear and maintain drainage channels especially in paddy, sugarcane, and vegetable fields. Provide support to tall crops like banana, maize and sunflower to prevent breakage or lodging.

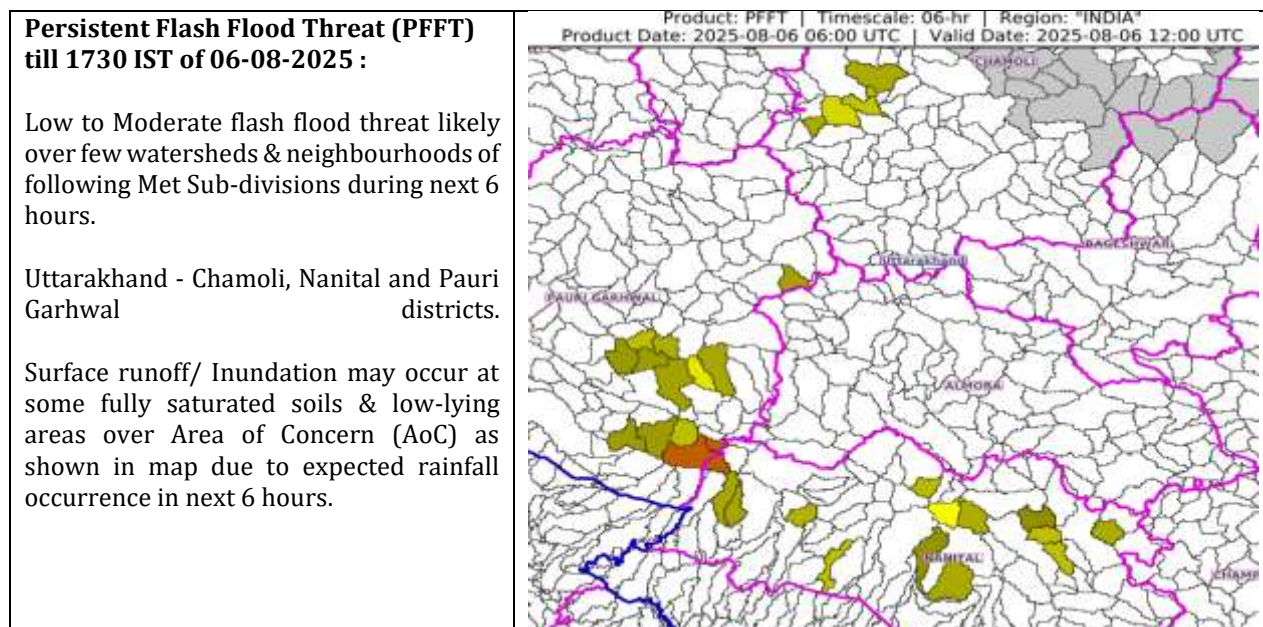
Livestock / Fishery

- Keep the animals inside the shed during heavy rainfall and provide them balanced feed.
- Store feed and fodder in a safe place to prevent spoilage.
- Construct an outlet with proper netting around the ponds to drain out excess water, thereby preventing fish from escaping in case of overflow.

Agromet advisories for likely impact of Thunderstorm / Gusty Winds / Squally Winds

- Provide mechanical support to horticultural crops and staking or support to vegetables and young fruit plants / fruit-bearing plants to avoid lodging due to strong winds.

Flash flood guidance:



24 hours Outlook for the Flash Flood Risk (FFR) till 1130 IST of 07-08-2025

:

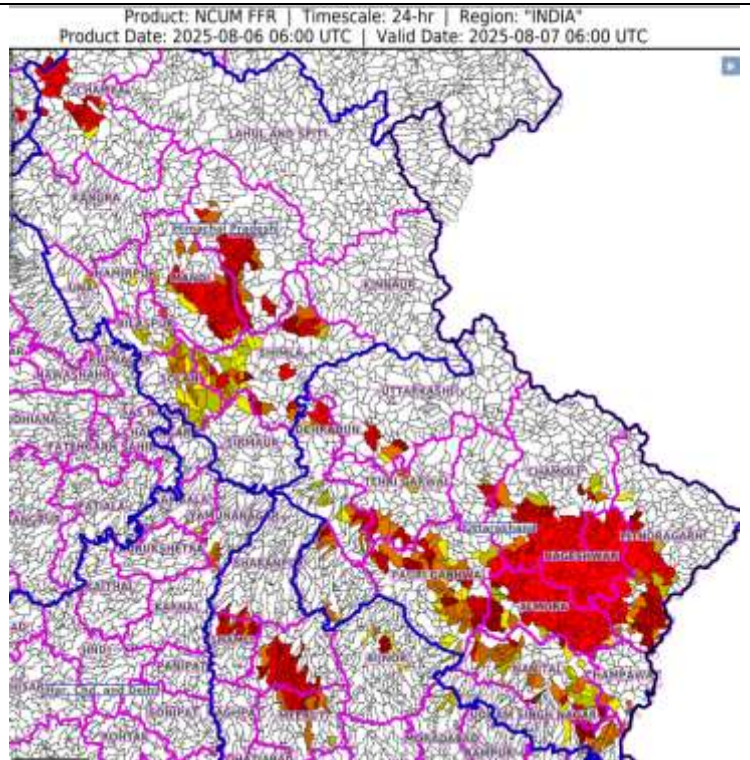
Low to Moderate flash flood risk likely over few watersheds & neighbourhoods of following Met Sub-divisions during next 24 hours.

Himachal Pradesh - Bilaspur, Chamba, Hamirpur, Kullu, Mandi, Shimla, Solan and Una districts.

Uttarakhand - Almora, Bageshwar, Chamoli, Champawat, Dehradun, Haridwar, Nanital, Pauri Garhwal, Pithoragarh, Rudraprayag, Tehri Garwal, Udham Singh Nagar and Uttarkashi districts.

West Uttar Pradesh - Bijnor, Meerut, Muzafarnagar, Shamli and Sharanpur districts.

Surface runoff/ Inundation may occur at some fully saturated soils & low-lying areas over Area of Concern (AoC) as shown in map due to expected rainfall occurrence in next 24 hours.



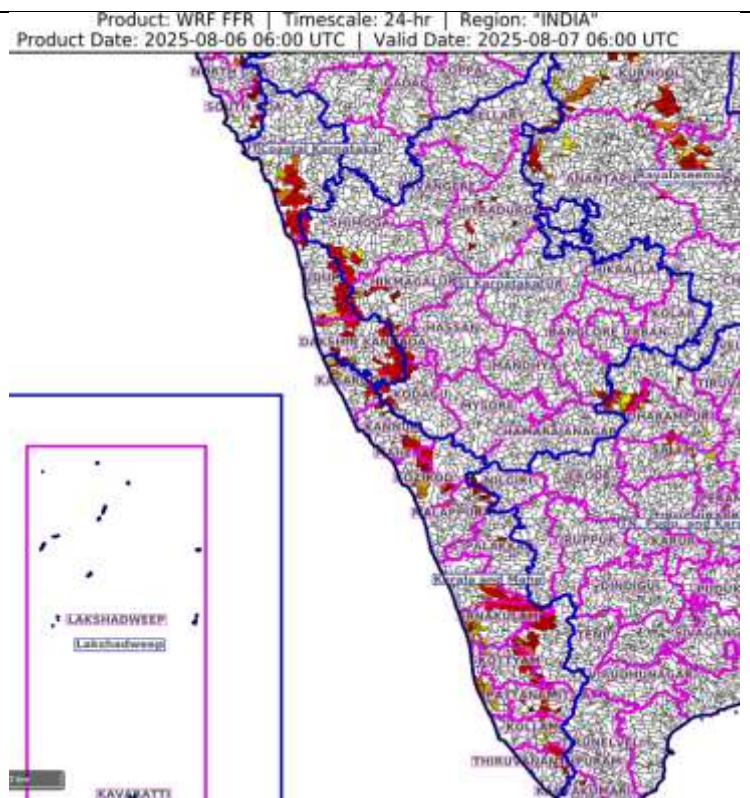
24 hours Outlook for the Flash Flood Risk (FFR) till 1130 IST of 07-08-2025

:

Low to Moderate flash flood risk likely over few watersheds & neighbourhoods of following Met Sub-divisions during next 24 hours.

Coastal Karnataka - Dakshin Kannada, Udupi and Uttar Kannada districts. Kerala & Mahe - Alappuzha, Ernakulam, Idukki, Kannur, Kasargod, Kollam, Kottiyam, Kozikod, Malappuram, Palakkad, Pattanamittia, Thiruvananthpuram, Trishur and Wayanad districts.

Surface runoff/ Inundation may occur at some fully saturated soils & low-lying areas over Area of Concern (AoC) as shown in map due to expected rainfall occurrence in next 24 hours.



Legends & abbreviations:

- ❖ **Heavy Rain:**64.5-115.5mm; **Very Heavy Rain:**115.6-204.4mm; **Extremely Heavy Rain:** >204.4mm.
- ❖ **Obsy:** Observatory; Automatic Weather Station; **ARG:** Automatic Rain Gauge; **dist:** District; **NH:** National Highway; **KVK:** Krishi Vigyan Kendra; **DVC:** Damodar Valley Corporation; **PTO:** Part Time Office, **Aero:** Aerodrome, **IAF:** Indian Air Force.
- ❖ **Region wise classification of meteorological Sub-Divisions:**
 - **Northwest India:** Western Himalayan Region (Jammu-Kashmir-Ladakh-Gilgit-Baltistan-Muzaffarabad, Himachal Pradesh and Uttarakhand); Punjab, Haryana-Chandigarh-Delhi; West Uttar Pradesh, East Uttar Pradesh, West Rajasthan and East Rajasthan.
 - **Central India:** West Madhya Pradesh, East Madhya Pradesh, Vidarbha and Chhattisgarh.
 - **East India:** Bihar, Jharkhand, Sub-Himalayan West Bengal & Sikkim; Gangetic West Bengal, Odisha and Andaman & Nicobar Islands.
 - **Northeast India:** Arunachal Pradesh, Assam & Meghalaya and Nagaland, Manipur, Mizoram & Tripura.
 - **West India:** Gujarat Region, Saurashtra & Kutch, Konkan & Goa, Madhya Maharashtra and Marathawada.
 - **South India:** Coastal Andhra Pradesh & Yanam, Telangana, Rayalaseema, Coastal Karnataka, North Interior Karnataka, South Interior Karnataka, Kerala & Mahe, Tamil Nadu, Puducherry & Karaikal and Lakshadweep.

LEGENDS

1. अंडमान और निकोबार द्वीपसमूह

2. अरुणाचल प्रदेश

3. असम और मेघालय

4. नागालैंड, मणिपुर, मिजोरम और त्रिपुरा

5. उप-हिमालयी पश्चिम बंगाल और सिक्किम

6. गंगीय पश्चिम बंगाल

7. ओडिशा

8. झारखंड

9. बिहार

10. पूर्वी उत्तर प्रदेश

11. पश्चिम उत्तर प्रदेश

12. उत्तराखंड

13. हरियाणा, चंडीगढ़ और दिल्ली

14. पंजाब

15. हिमाचल प्रदेश

16. जम्मू और कश्मीर और लद्दाख

17. पश्चिम राजस्थान

18. पूर्वी राजस्थान

19. पश्चिम मध्य प्रदेश

20. पूर्वी मध्य प्रदेश

21. गुजरात

22. सौराष्ट्र

23. कोंकण और गोवा

24. मध्य महाराष्ट्र

25. मराठवाड़ा

26. विदर्भ

27. छत्तीसगढ़

28. तटीय आंध्र प्रदेश और यनम

29. तेलंगाना

30. रायलसीमा

31. तमिलनाडु, पुडुचेरी और कराईकल

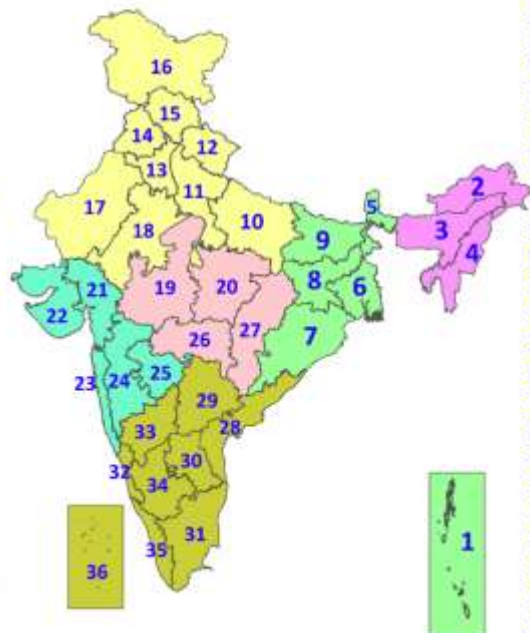
32. तटीय कर्नाटक

33. आंतरिक उत्तरी कर्नाटक

34. आंतरिक दक्षिणी कर्नाटक

35. केरल और माहे

36. लक्षद्वीप



1. Andaman & Nicobar Islands

2. Arunachal Pradesh

3. Assam & Meghalaya

4. Nagaland, Manipur, Mizoram & Tripura

5. Sub-Himalayan West Bengal & Sikkim

6. Gangetic West Bengal

7. Odisha

8. Jharkhand

9. Bihar

10. East Uttar Pradesh

11. West Uttar Pradesh

12. Uttarakhand

13. Haryana, Chandigarh & Delhi

14. Punjab

15. Himachal Pradesh

16. Jammu & Kashmir and Ladakh

17. West Rajasthan

18. East Rajasthan

19. West Madhya Pradesh

20. East Madhya Pradesh

21. Gujarat

22. Saurashtra

23. Konkan & Goa

24. Madhya Maharashtra

25. Marathwada

26. Vidarbha

27. Chhattisgarh

28. Coastal Andhra Pradesh & Yanam

29. Telangana

30. Rayalaseema

31. Tamilnadu, Puducherry & Karaikal

32. Coastal Karnataka

33. North Interior Karnataka

34. South Interior Karnataka

35. Kerala & Mahe

36. Lakshadweep

SPATIAL DISTRIBUTION (% of Stations reporting)

| % Stations | Category | % Stations | Category |
|------------|-------------------------------------|------------|------------------------------|
| 76-100 | Widespread (WS/Most Places) | 26-50 | Scattered (SCT/A Few Places) |
| 51-75 | Fairly Widespread (FWS/Many Places) | 1-25 | Isolated (ISOL) |



Fog



Heavy Snow



Cold Wave



Heavy Rain



Dust Storm



Cold Day



Very Heavy Rain



Heat Wave



Ground Frost



Extremely Heavy Rain



Warm Night



Thunder & Lightning



Hot Day



Hailstorm



Hot & Humid



Dust Raising Winds



Strong Surface Winds

COLOUR CODED WARNING

No Warning (No Action)

Watch (Be Aware)

Alert (Be Prepared To Take Action)

Warning (Take Action)

Probabilistic Forecast

| Terms | Probability of Occurrence (%) |
|-------------|-------------------------------|
| Unlikely | < 25 |
| Likely | 25 - 50 |
| Very Likely | 50 - 75 |
| Most Likely | > 75 |

* Red colour warning does not mean "Red Alert", Red colour warning means "Take Action".

Forecast and Warning for any day is valid from 0830 hours IST of day till 0830 hours IST of next day.

For more details, kindly visit <https://mausam.imd.gov.in> or contact: 011-2434-4599

(Service to the Nation since 1875)

DEFINITION/CRITERIA

Rain/ Snow *

Heavy: 64.5 to 115.5 mm/cm *
Very Heavy: 115.6 to 204.4 mm/cm *
Extremely Heavy: > 204.4 mm/cm *

Heat Wave

When maximum temperature of a station reaches $\geq 40^{\circ}\text{C}$ for plains and $\geq 30^{\circ}\text{C}$ for hilly regions

(a) Based on Departure from normal

Heat Wave: Maximum Temperature Departure from normal 4.5°C to 6.4°C .

Severe Heat Wave: Maximum Temperature Departure from normal $\geq 6.5^{\circ}\text{C}$

(b). Based on Actual maximum temperature

Heat Wave: When actual maximum temperature $\geq 45^{\circ}\text{C}$.

Severe Heat Wave: When actual maximum temperature $\geq 47^{\circ}\text{C}$.

(c). Criteria for heat wave for coastal stations

When maximum temperature departure is $> 4.5^{\circ}\text{C}$ from normal. Heat Wave may be described provided maximum temperature $\geq 37^{\circ}\text{C}$.

Warm Night

When maximum temperature remains 40°C

Warm Night: When minimum temperature departure 4.5°C to 6.4°C .

Severe Warm Night: When minimum temperature departure $> 6.4^{\circ}\text{C}$.

Cold Wave

When minimum temperature of a station $\leq 10^{\circ}\text{C}$ for plains and $\leq 0^{\circ}\text{C}$ for hilly regions.

(a). Based on departure

Cold Wave: Minimum Temperature Departure from normal -4.5°C to -6.4°C .

Severe Cold Wave: Minimum Temperature Departure from normal $\leq -6.5^{\circ}\text{C}$

(b) Based on actual Minimum Temperature (for Plains only)

Cold Wave: When Minimum Temperature is $\leq 4.0^{\circ}\text{C}$

Severe Cold Wave: When Minimum Temperature is $\leq 2.0^{\circ}\text{C}$

(c) For Coastal Stations

When Minimum Temperature departure is $\leq -4.5^{\circ}\text{C}$ & actual Minimum Temperature is $\leq 15^{\circ}\text{C}$

Cold Day

When minimum temperature of a station $\leq 10^{\circ}\text{C}$ for plains and $\leq 0^{\circ}\text{C}$ for hilly regions

Based on departure

Cold Day: Maximum Temperature Departure from normal -4.5°C to -6.4°C .

Severe Cold Day: Maximum Temperature Departure from normal $\leq -6.5^{\circ}\text{C}$

Fog

Phenomenon of small droplets suspended in air and the horizontal visibility $< 1\text{km}$

Moderate Fog: When the visibility between 500-200 metres

Dense Fog: when the visibility between 50- 200 metres

Very Dense Fog: when the visibility < 50 metres

Thunderstorm

Sudden electrical discharges manifested by a flash of light (Lightning) and a sharp rumbling sound (thunder)

Dust/Sand Storm

An ensemble of particles of dust or sand energetically lifted to great heights by a strong and turbulent wind.

Frost

Ice deposits on ground

Air temperature $\leq 4^{\circ}\text{C}$ (over Plains)

Squall

A strong wind that rises suddenly, lasts for atleast 1 minute.

Moderate: Wind speed 52-61 kmph

Severe: Wind speed 62-67 kmph

Very Severe: Wind speed > 67 kmph

Sea State

Effect of various waves in the sea over specific area

Rough to very rough: Wind speed 41-62 kmph (22-33 knots) & Wave height 2.5-6 metre

High to very high: Wind speed 63-117 kmph (34-63 knots) & Wave height 6-14 metre

Phenomenal: Wind speed > 117 kmph (> 63 knots) & Wave height > 14 metre

Cyclone

Cyclonic Storm: Wind speed 62-87 kmph (34-47 knots)

Severe Cyclonic Storm: Wind speed 88-117 kmph (48-63 knots)

Very Severe Cyclonic Storm: Wind speed 118-165 kmph (64 - 89 knots)

Extremely Severe Cyclonic Storm: Wind speed 166-220 kmph (90 -119 knots)

Super Cyclone Storm: Wind speed > 220 kmph (> 119 knots)

* Red colour warning does not mean "Red Alert", Red colour warning means "Take Action".

Forecast and Warning for any day is valid from 0830 hours IST of day till 0830 hours IST of next day.

For more details, kindly visit <https://mausam.imd.gov.in> or contact: 011-2434-4599

(Service to the Nation since 1875)

Hot and Humid: When maximum temperatures remain 3°C above normal along with the above normal relative humidity.